



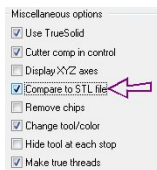
Compare to STL

STL comparison allows you to check the accuracy of the cut model created by Verify against an STL of the finished part geometry.

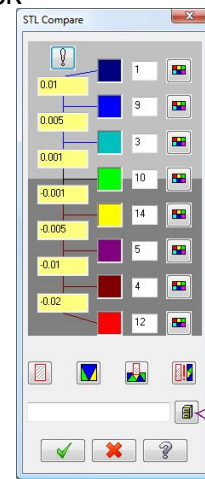
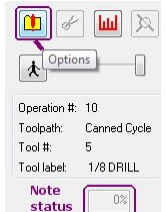
Started by calling *File/save as* and set the file type to save as STL. Save the STL in the data folder (typically C:\mcamx\data)

- Launch verify and click the options button before starting playback

- Check “compare to STL” in the miscellaneous options section

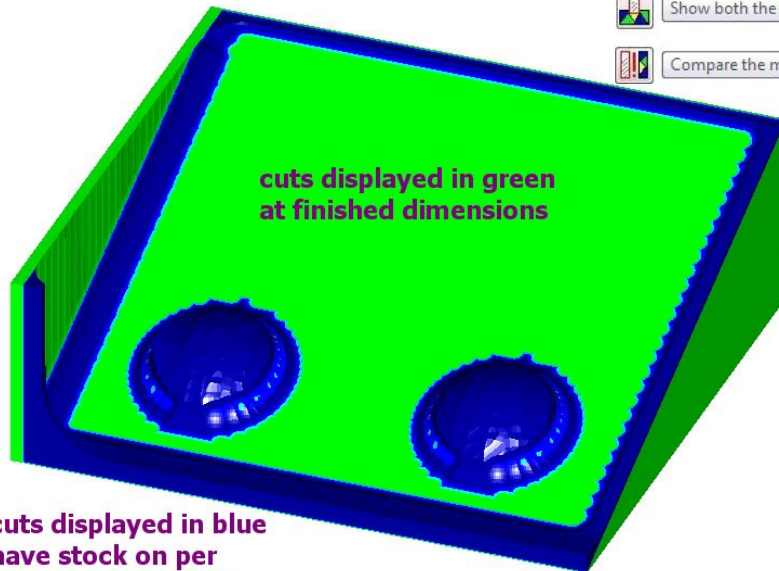
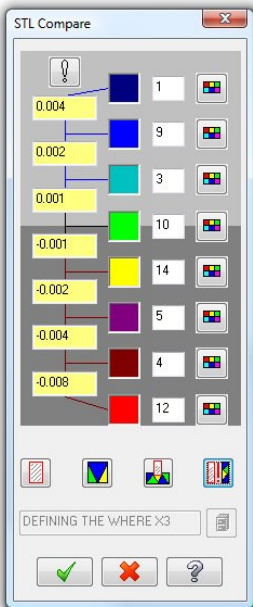


- Click the play button
- When verify reaches 100% a new dialog box will appear with a rainbow color code.
- Click the indicated icon and select your saved reference file.
- The four icons arrayed above the file path will display the cut simulation, finished part, both STLs together, or a color coded overlay depicting stock on conditions



Click to select file for comparison

- Display machined stock
- Display STL file
- Show both the machined stock and the STL file
- Compare the machined stock and the STL file



cuts displayed in blue have stock on per range in dialog box